

March 2018



Generous Support



CCRC Service Area Child Care Investment
\$141,052,119



 **20,952** Parents Earning
\$367,840,894 

• **AND** •

BUILDING A Better Foundation
For **32,518** Children



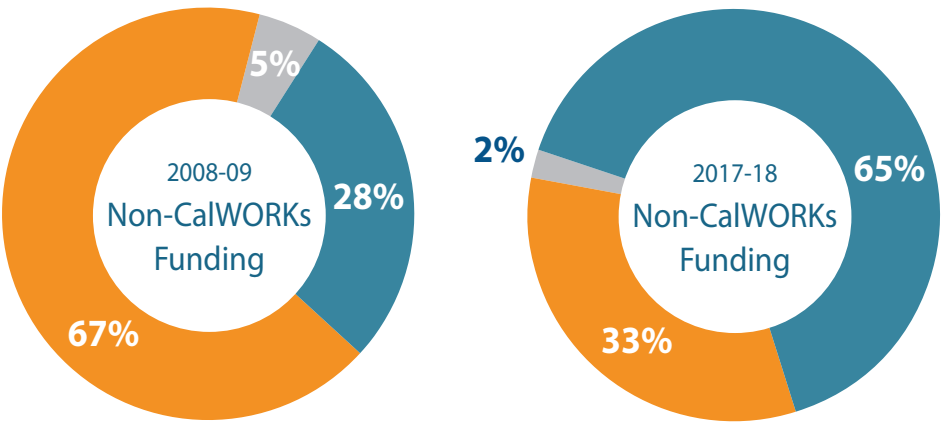
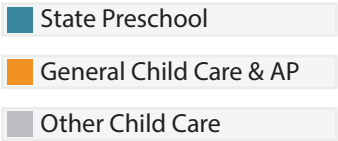
THANK YOU

PROGRAM DIFFERENCES

Child Care vs. Preschool FUNDING



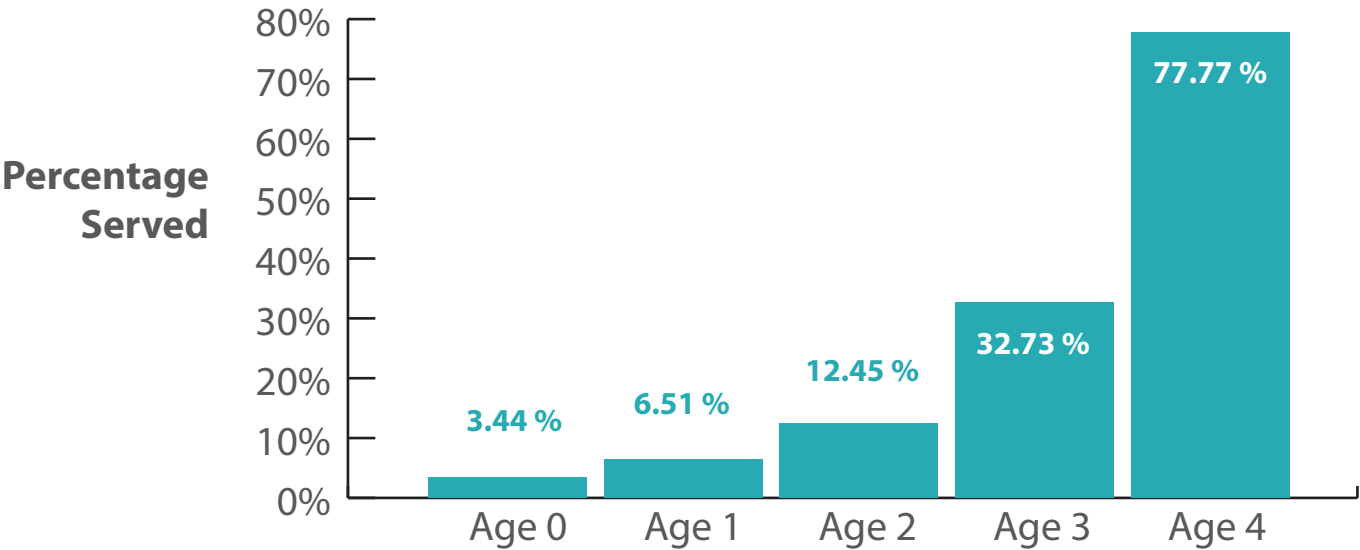
Exhibit A



Funding for State Preschool (in blue) has increased by 37 percentage points from 2008-09 to 2017-18, whereas General Child Care and Alternative Payment (AP) funding (in orange) has decreased by 34 percentage points in that same time frame.

Exhibit B

% of Eligible Children Served in Subsidized Programs by Age in LA County***



***Information from American Institutes for Research

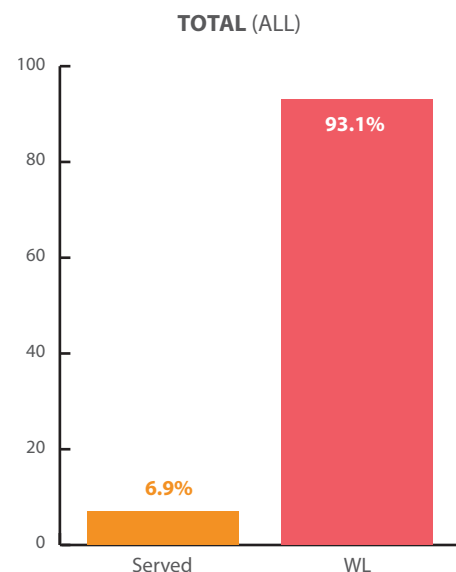
Less than 1/3 of eligible children aged 0-3 in Los Angeles County are served in subsidized programs, whereas over 3/4 of eligible 4-year-olds are served in subsidized programs.

Limited Investments Create Long Waitlist for Care

Families with subsidized child care have better employment, economic, parenting, and child outcomes than families waiting for subsidized child care.

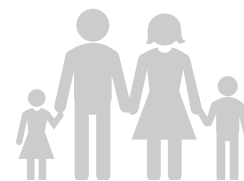
▲ AP Child Enrollment by Age		▲ AP Waitlist (WL) by Age	
TOTAL		TOTAL	
LA County	1,866	LA County	28,354
SB County	1,169	SB County	12,916
TOTAL	3,035	TOTAL	41,270
100%		100%	

TOTAL Children Enrolled	3,035	6.9%	0-2 Infants Enrolled	299	3.7%
TOTAL Children on WL	41,270	93.1%	0-2 Infants on WL	7,841	96.3%
TOTAL (ALL)	44,305	100%	TOTAL 0-2	8,140	100%
# Children		%	# Children		%



"I don't feel as stressed, depressed or tied down. I'm able to work (part-time) and attend school (part-time) to finish what I started long ago. When spending time with my kids I'm more patient and look forward to our "special day" as they call it. We play around more and I'm able to function better (less stress). We have a much better relationship. Thank you!!" --CCRC Parent

ECONOMIC INVESTMENT + FAMILY SUPPORT = Strengthened, Successful FAMILIES



Economics and Parenting

- Keep a job
- Attend education/training
- Make ends meet
- Work overtime
- Be the kind of parent you want to be

	Family with Subsidized Child Care	Waitlist Family
	85.8%	71.4%
	44.3%	30.4%
	73.3%	46.7%
	38.1%	25.9%
	86.1%	67.9%

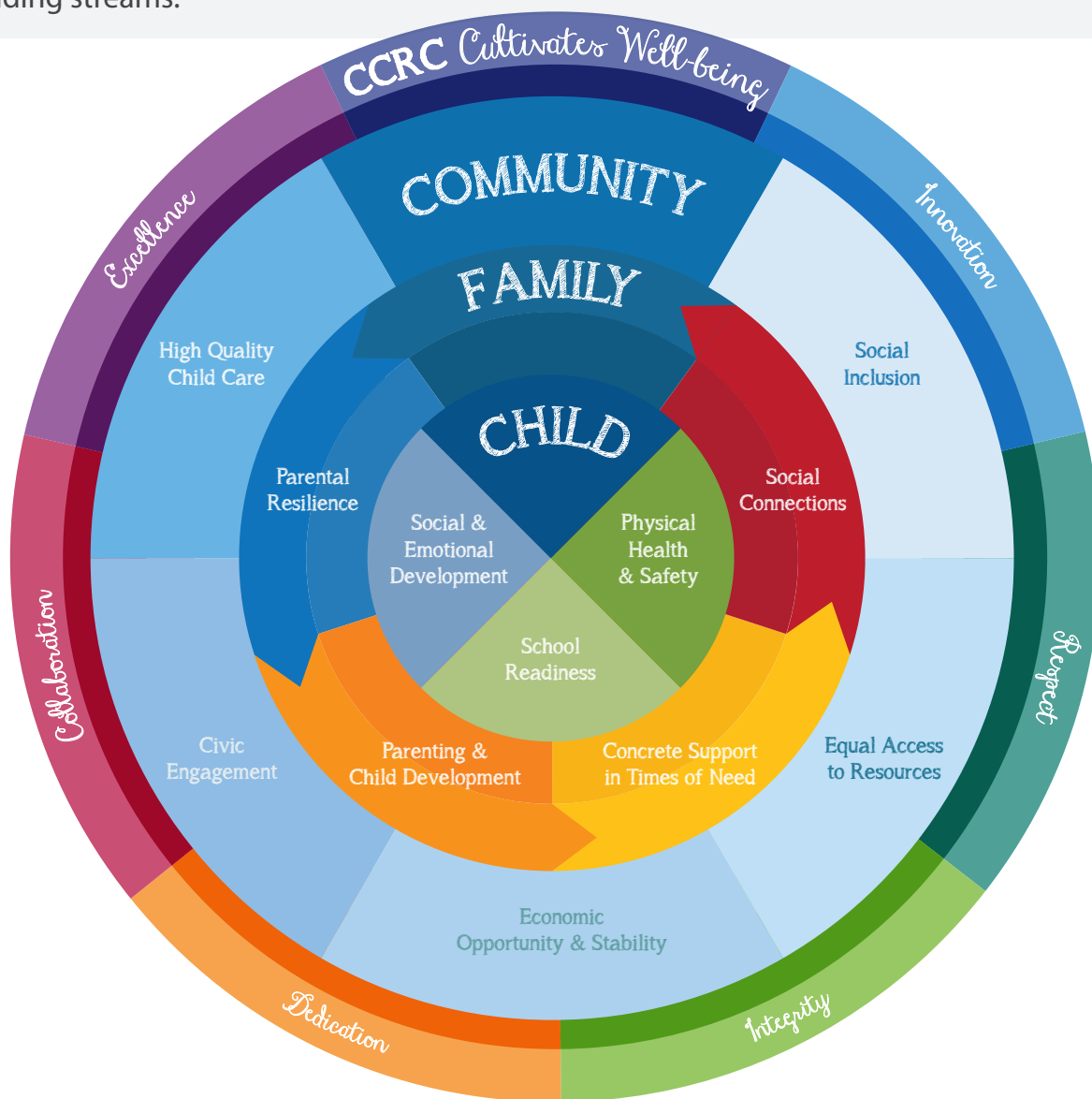
Child Development

- Grow and develop physically
- Learn what they should know and do for their age
- Get along better with other children
- School readiness
- Do better in school

	93.9%	75.7%
	92.4%	77.2%
	94.3%	76.6%
	84.9%	66.5%
	86.0%	62.7%

CHILDREN AND FAMILIES LIVING IN THRIVING COMMUNITIES

This concentric circles diagram represents CCRC's big picture point of view. It encompasses issues related to society and environment and other things that we, as an agency, may not be able to control. But, when we look to the future – short and long term – we make sure that we continue to focus on three main things: understanding our purpose and protecting the core of what we have been doing for the past 40 years, recognizing and understanding our strengths and opportunities, and developing diverse and viable funding streams.



We are excited about the progress we have made in our journey over the last four decades but we're not done yet! Want to help us make an even bigger impact over the next 40 years? We're always looking for talented staff and board members, volunteers and, of course, donors! Give us a call at 866-67-4KIDS.