



# Parent Voices

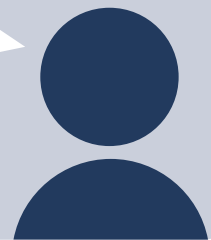
## The Impact of Head Start Programs

Head Start programs support children's growth from birth to age 5 through services centered around early learning and development, health, and family well-being. Head Start staff actively engage parents, recognizing family participation throughout the program as key to strong child outcomes. This brief summarizes parent evaluations across all of CCRC's Head Start and Early Head Start programs. These programs make a significant difference in the lives of children and families. Any policy that sustains these programs ensures the future success of children and families as they move on to other educational and employment opportunities.

At least **94%**  
of parents reported the  
Head Start program was  
good or very good.

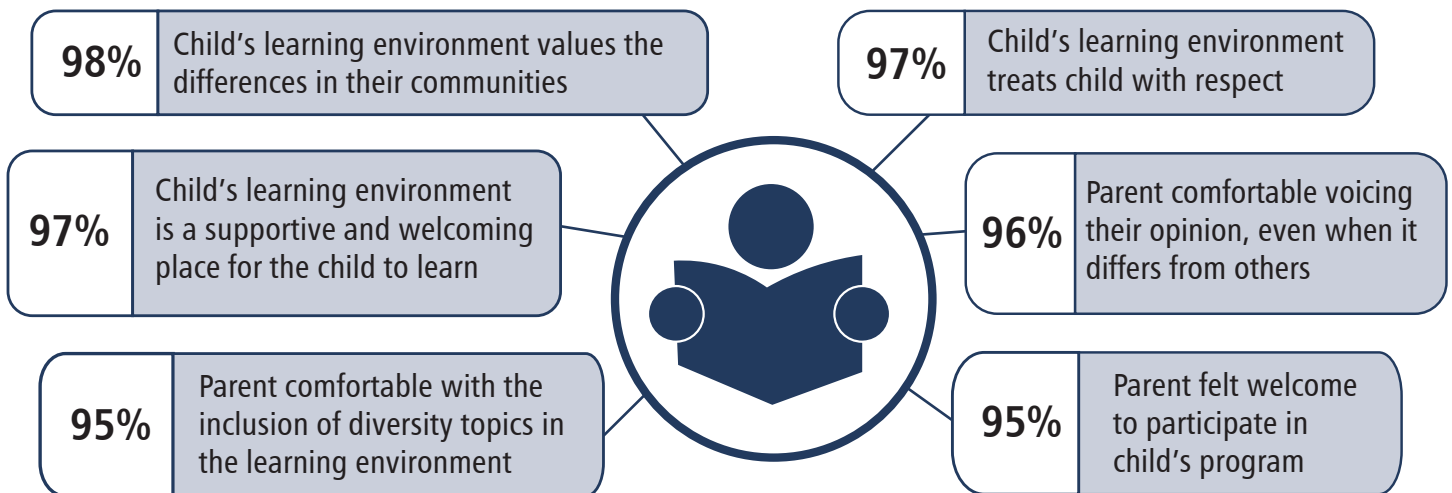


My child enjoys socializing and  
is ready to start kindergarten  
when the time comes.



## Diversity, Equity and Inclusion

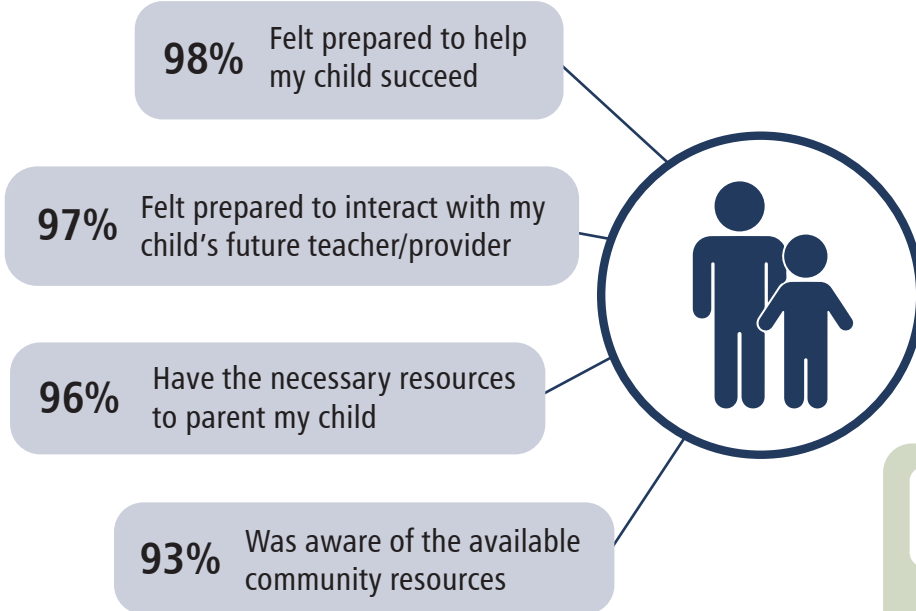
Early Head Start and Head Start programs model diverse and inclusive environments and foster equity in programs.



Early childhood is the ideal time to begin emphasizing the importance of diversity, equity and inclusion. I find this highly important to help children recognize the differences in genders, cultural backgrounds and/or physical abilities and will help them become functional citizens.

## Empowering Parents to Help Children Succeed

These programs build the capacity of parents to help their children succeed.



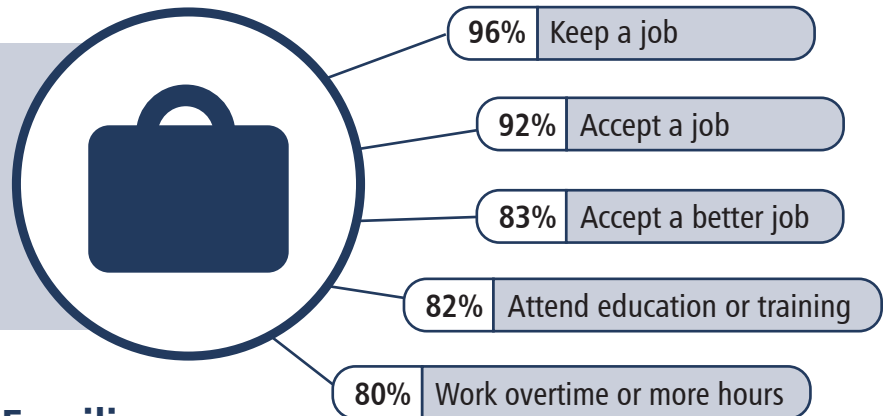
**97%**  
of families report that the process of goal-setting with a family advocate was helpful or very helpful.

My child has learned ABCs, numbers, shapes, colors.

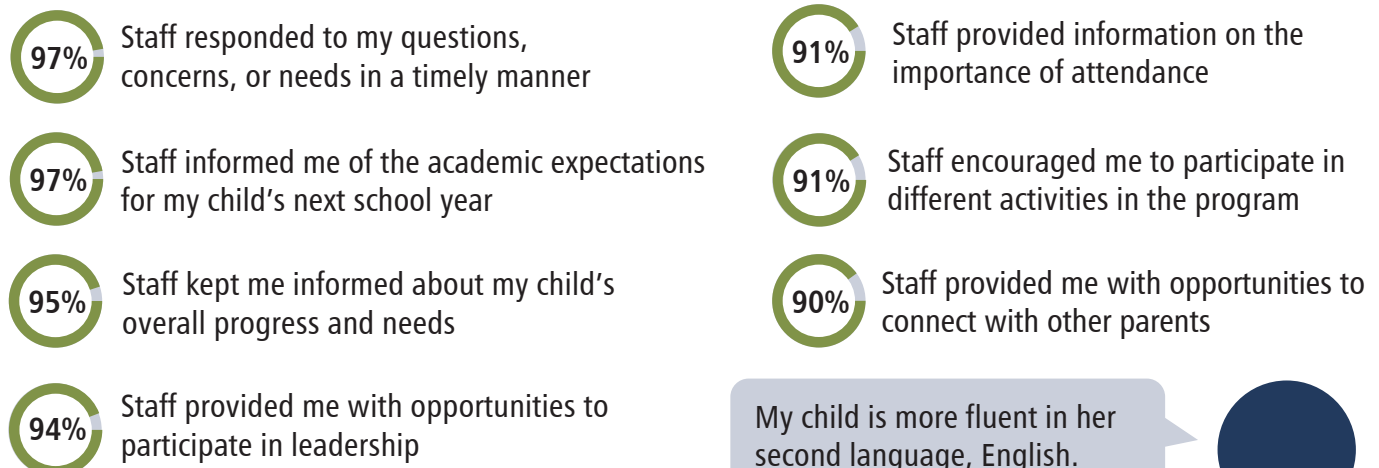
## Economic Stability and Advancement

Participation in these programs facilitated parents' economic stability and advancement by allowing them to engage in employment and education.

A lack of child care was the top reason why parents were not able to engage in employment or education opportunities, with the largest group being parents in the Home-based program.



## Staff Support Children and Families



## Key Results for Families: Health, Nutrition, and Early Intervention



**97%** of children are up to date with **immunizations**



**95%** of children have access to a **medical home**



**90%** of children have access to a **dental home**



Over **4,000 nutritious breakfasts, lunches and snacks** are served each day to children.

All children receive health and development screening. Of those screened, almost 300 have been connected to partners for **follow-up assessment and early intervention services**, typically in the areas of Speech and Language Impairment, Developmental Delay, or Autism.



My child had the opportunity to interact with other children and make friends.



## Call to Action



**Almost 2/3 of CCRC classrooms are either closed or have limited enrollment due to staffing shortages!**

The positive results described above are impossible to achieve when enrollment is limited. Ensuring programs are well-funded and staff paid livable and competitive wages is key to ensuring these programs remain available to families, particularly those impacted by poverty. Head Start is a place-based system of care where children and families receive community supportive services and experience well-being. This whole child and family approach is provided in a trusted environment that sets a trajectory for lifetime outcomes. Adequate staffing is essential to families accessing supportive services.